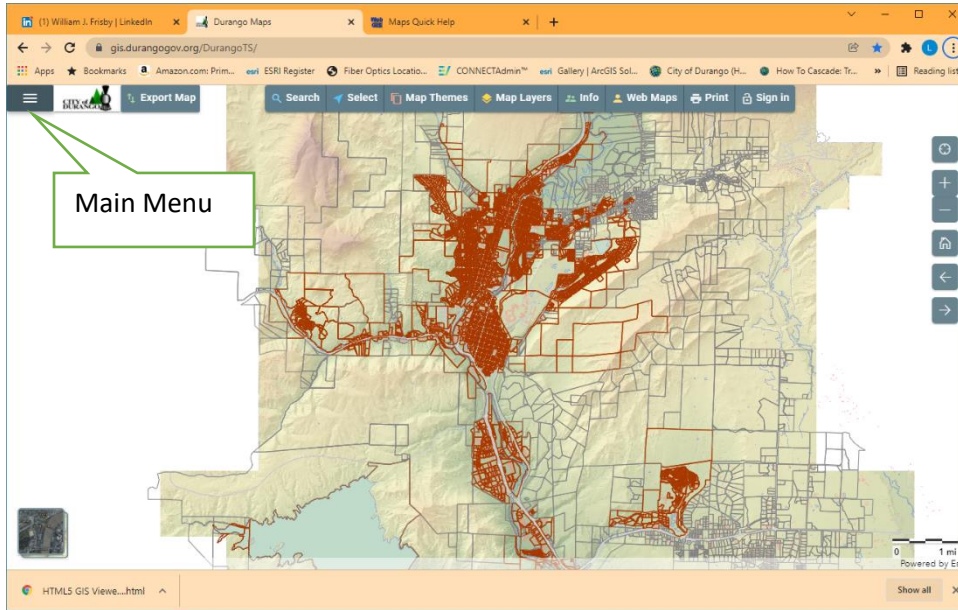


Tips

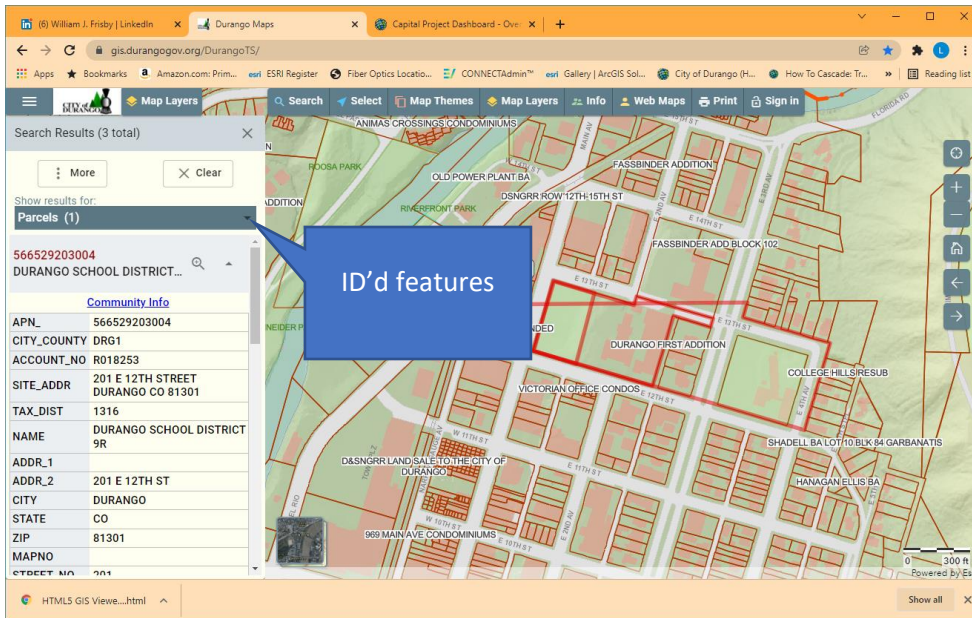


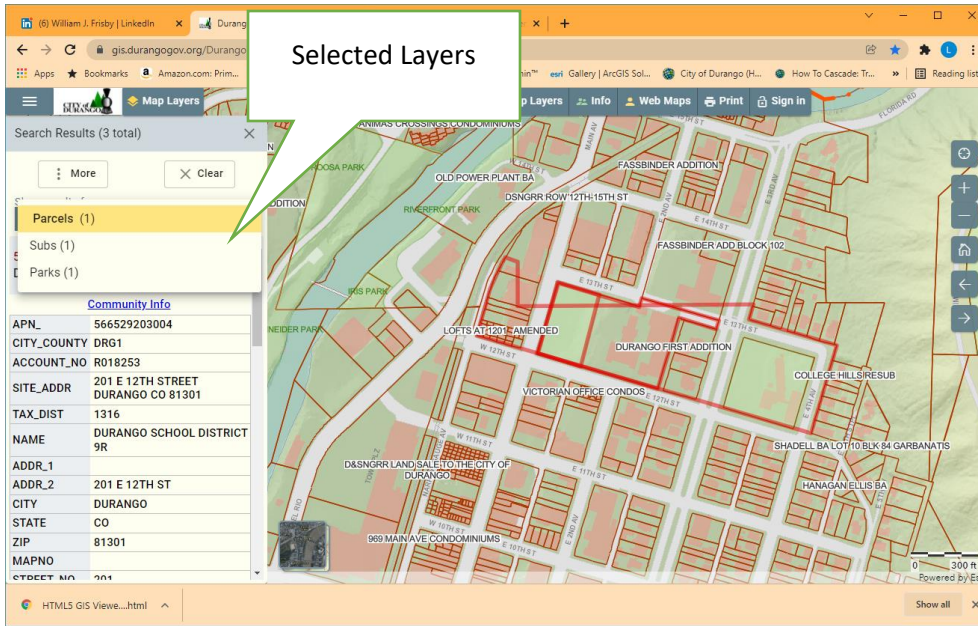
There is no button to open to use the ID function. It is always on. Any layers that you have turned on will be used when you touch anywhere on the map.

Everything that is ID'd will show up here.

Where the heading Parcels (1) is on the dark green bar.

Hitting the Down triangle will open all layers ID'd





Highlight the Layer you want.

You can change the background basemap via the “Basemap Gallery” menu item.

Choices are Aerial Photography dating back to 2001 to 2021. A couple of Relief Maps.

