

RECLAMATION

Managing Water in the West

Lake Nighthorse

Community Meeting

June 18, 2014



U.S. Department of the Interior
Bureau of Reclamation

Welcome and Introductions

Bureau of Reclamation Staff

Purpose of the Meeting

RECLAMATION

Purpose of the Project

- **Animas-La Plata Project**
 - **Lake Nighthorse**
 - **Ridges Basin Dam**
 - **Durango Pumping Plant**

A federal water project under the jurisdiction of the Bureau of Reclamation.

RECLAMATION

Purpose of the Project

Key Component:

Settlement of Tribal Water Rights

Primary Purpose:

Municipal & Industrial (Drinking) Water Supply

Secondary Purpose:

Recreation

RECLAMATION

Roles and Responsibilities

- Reclamation
- Animas-La Plata Operation, Maintenance, and Replacement Association
 - Animas-La Plata Water Conservancy District
 - City of Durango
 - Colorado Water Conservation Board
 - Colorado Water Resources & Power Development Authority
 - La Plata Conservancy District
 - Navajo Nation
 - San Juan Water Commission
 - Southern Ute Indian Tribe
 - Ute Mountain Ute Tribe

RECLAMATION

Project Overview

Ridges Basin Dam and Lake Nighthorse

Reservoir Capacity – 123,541 acre-feet

Water Surface Area – 1,500 acres

Reservoir Area – 5,500 acres



RECLAMATION

Project Overview (con't)

Durango Pumping Plant



Water from Animas River pumped into Lake Nighthorse through the Ridges Basin Inlet Conduit – 72-inches diameter & 2.1 miles long buried pipeline.

Project Overview (con't)

Management of the Area

- Lake Nighthorse is currently closed.
- The area will remain closed until.....
 - Recreation manager
 - Appropriate recreation facilities to protect the water and land

Recreation Update

- Due to funding constraints, the State of Colorado was not able to develop and manage recreation facilities at Lake Nighthorse except for funding construction of a boat ramp.
- Boat Ramp - 40 foot wide concrete ramp
 - Gravel access road from County Road 210
 - Paved Parking Area & Vault Toilet

Recreation Update (con't)

- Recreation Master Plan
- Community planning effort sponsored by Animas-La Plata Water Conservancy District.
- The City of Durango became interested in becoming the recreation manager.

Recreation Update (con't)

Major Areas of Concern:

- Develop recreation & ensure compatibility with the primary purpose of the project – drinking water supply.
- Annexation of the recreation area for law enforcement purposes.
- Protect: Tribal cultural resources
- Water quality
- Environmental commitments
- Tribal trust responsibilities & treaty rights

Recreation Update (con't)

Steps in the Process:

- Ongoing discussions with all Project partners & stakeholders –
Recreation Lease Agreement
Annexation Agreement
Planning Agreement
- Determine level of capital improvements.

Recreation Update (con't)

Steps in the Process:

- Capital Improvements (minimum needed)
 - Entrance station
 - Boat inspection and decontamination facilities
 - Additional parking and road improvements
 - Courtesy dock for boat ramp
 - Picnic areas

Recreation Update (con't)

Steps in the Process:

- Environmental Analysis
 - Analyze environmental impacts
 - Write draft environmental assessment
 - Solicit public review and comment
 - Review public comments – amend document - finalize

Recreation Update (con't)

Steps in the Process:

- Work with Tribes to draft Cultural Resource Management Plan

National Historic Preservation Act (Section 106)

Ensure protection of historic properties and cultural resources

- Identify effect of actions on historic properties/cultural resources
- Consult with Tribes/SHPO/THPO
- Resolve adverse effects

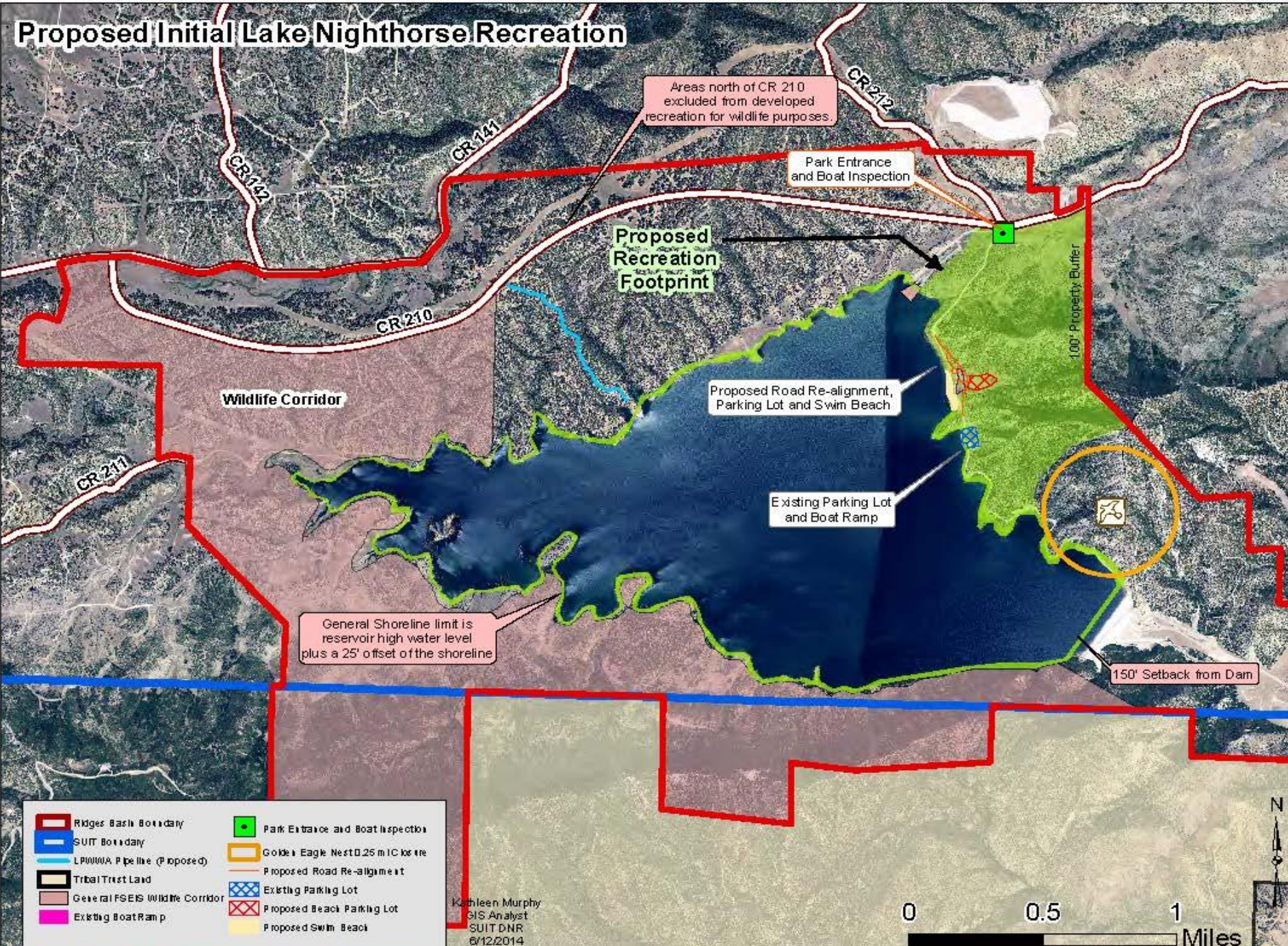
Recreation Update (con't)

Potential Recreation Footprint:

Based on ongoing discussions – a proposed recreation footprint has been envisioned which provides:

- A limited area to be developed for recreation.
 - Keeps the door open for future discussions regarding recreation development.

Proposed Initial Lake Nighthorse Recreation



Areas north of CR 210 excluded from developed recreation for wildlife purposes

Park Entrance and Boat Inspection

Proposed Recreation Footprint

Wildlife Corridor

Proposed Road Re-alignment, Parking Lot and Swim Beach

Existing Parking Lot and Boat Ramp

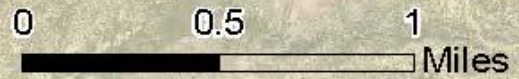
100' Property Buffer

General Shoreline limit is reservoir high water level plus a 25' offset of the shoreline

150' Setback from Dam

- Ridges Basin Boundary
- SUI Boundary
- LPWWA Pipeline (Proposed)
- Tribal Trust Land
- General FSEIS Wildlife Corridor
- Existing Boat Ramp
- Park Entrance and Boat Inspection
- Golden Eagle Nest 0.25 mile core
- Proposed Road Re-alignment
- Existing Parking Lot
- Proposed Beach Parking Lot
- Proposed Swim Beach

Kathleen Murphy
GIS Analyst
SUIT DNR
6/12/2014



Recreation Update (con't)

What's Next?

- Continue ongoing process to seek consensus among stakeholders to allow recreation at Lake Nighthorse.
 - Reclamation Lease Agreement
 - Annexation Agreement
 - Planning Agreement
 - Cultural Resource Management Plan
 - Environmental Assessment
 - Construction of minimum recreation facilities

- In the meantime - please respect Lake Nighthorse closure for protection of resources and public safety.

QUESTIONS??????

RECLAMATION

Contact Information

For more information about the Animas – La Plata Project:

- www.usbr.gov/uc/progact/animas/index.html
- Phone: 970-385-6500
- Email: wcaoinfo@usbr.gov